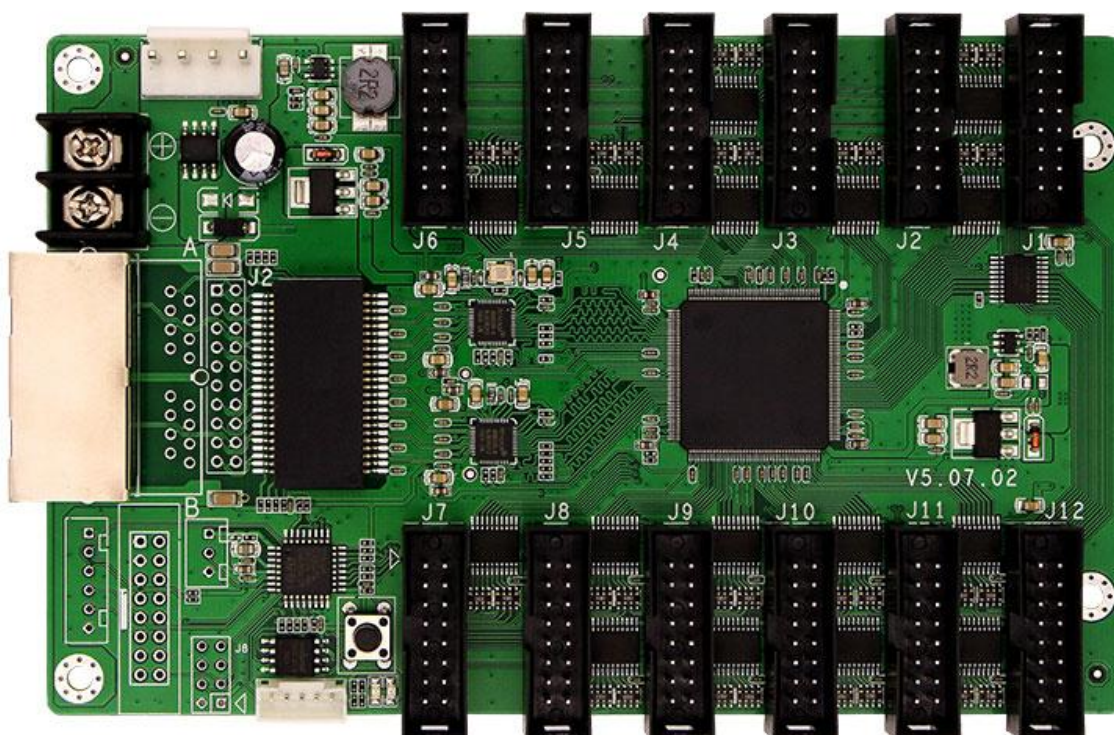


## Full Color Receiver T12

### Specification



### Product parameters:

Control area	512*512
Network Port Function	Network port no distinction of input and output
Synchronous among cards	Nanosecond synchronization among cards
Display effect	Common chip's refresh rate Static scan: refresh rate can be 16000Hz maximum 1/8 scan: refresh rate can be 10000Hz maximum Serial frequency: 0.2MHz-41.7MHz
Grey level	256-65536 levels grey adjustable
Grey level compensation	Compensation according to refresh and scan type
OE control	Accuracy 8 nanosecond OE control, making low grey control more accurate
Chip support	Common chip, PWM chip, light decoration chip and all kinds of mainstream LED drive chips
Scan type	Common scan type and high refresh photo mode

Scan type	Any scan type from static to 1/128 scan
Data group number	24 groups full color data
Multiple open outputs	support 2-4 multiple open outputs
Data exchange	Support 24 groups data arbitrary exchange
Module pumping points	Support any module pumping point
Gigabit communication	Support sending card and Gigabit Ethernet
PCB size	Length:143mm Width:93mm
Input voltage	DC 3.5V~6V
Rated current	0.8A
Rated power consumption	4W
Working temperature	-20°C to 75°C
HUB Port	12 pieces HUB75 ports
Compatible Sending Card	ZH all series sending box and video processor
Software	LED Player V5

## Product Features:

1. Have hub75 port, no need of switching board, more convenient;
2. Reduce connecting parts, reduce failure points;
3. Support common chips achieving high refresh, high grey, high brightness;
4. Fully new grey engine, low grey better performance;
5. Perfect details handling, can get rid of certain row darker, low grey redder, ghost shadow and so on details problems;
6. Support all common chips, PWM chips and light decoration chips;
7. Support static screen, and any scan type from 1/2 scan to 1/128 scan;
8. Support any pumping point, support data migration, easy to achieve the control loading of all kinds of shaped screens, spherical screens, creative screens;
9. Single card support 24 groups RGB signal output;
10. Support super big area loading;
11. Advanced design, quality components, automatically high and low temperature aging test, zero failure leaving from factory;
12. Support DC 3.3V-6V super wide working voltage, effectively reduce the influence of voltage wave;
13. Support power supply reverse connection protecting circuit.